

SELF/4000

Compact, engaging and scalable all-in-one payment solution for your self-service indoor and outdoor kiosks



- Accept all payment methods including magstripe, EMV and NFC/Contactless and QR codes
- Easily integrate cashless payment in self-service indoor kiosks
- Offer the best-in-class self-service solution with color screen, camera, sound alerts and additional support for visually impaired people
- Simplify solution integration, operation and scalability





With Self/4000, easily integrate cashless payment in self-service kiosks.



All methods of payment accepted including QR-code based payment

Ruggedized:

- Designed for intensive use cases: IK09
- Indoor our outdoor: IP44

Easy integration into a machine from the front or from the rear

Highest level of security with PCI PTS certification

Modularity:

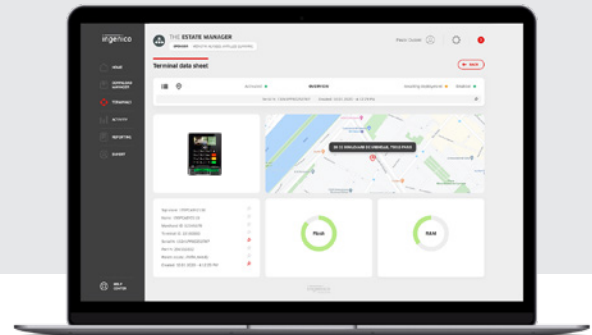
- Add-on boxes to build the desired configurations (MDB, 4G, BT)
- Upgradeable in the field

Ergonomic interface:

- Easy-to-use customer interface thanks to a simple UI
- Mechanical backlit keyboard for PIN entry and color display

Supported by Ingenico's suite of services

- Fleet management & security solutions
- Hardware services
- Professional services



Processor / OS	• Cortex A5 - Telium TETRA	✓
Memory	• 512 MB Flash, 512 MB RAM • MicroSD up to 32GB	✓ ✓
SAM	• 2xSAM ID-000	✓
Contactless reader	• EMV Level 1 compliant / ISO 14443 A/B/B'	✓
Contact reader	• Hybrid card reader with shutter • RGB LEDs in reader's entry mouth • Smart card – EMV L1 – 500k reads lifespan • MSR ISO 1/2/3 – 500k reads lifespan	✓ ✓ ✓ ✓
Display	• 2.27" color IPS – 640 × 240 Wide angle viewing (+/- 180°)	✓
Keypad	• Mechanical 16 backlit keys keyboard	✓
Audio	• Buzzer Monotone • Wav sound (thru external speaker)	✓ ✓
Camera	• 2MP - fixed focal (Honeywell library embedded)	✓
Terminal connectivity	• Ethernet 10/100, 1 x RJ45 LAN port • 4G (with fallback 3G/2G) • Bluetooth 4.2	✓ Option Option
Terminal connections	• 1 x USB Slave • 2 x USB Host • 2 x RS232 • 1 x connector for external loudspeaker • 1 x MDB Master + 1 x MDB Slave	✓ ✓ ✓ ✓ Option

Security	• PCI PTS 5.1 certified	✓
IP	• IP 44	✓
IK	• IK 09	✓
Power supply	• 9-16 V DC (light sleep mode) • 10-45V DC with optional Add-on box	✓ Option
Terminal size	• EVA EPS - Standard Door Module • 85 (W) x 107.2 (H) x 109.6 (D) mm (3.3×4.2×4.3")	✓ ✓
Weight	• 620 g (22 oz)	✓
Environment	• -20°C to +70°C (-4°F to 158°F) - Operating • -20°C to +70°C (-4°F to 158°F) - Storage • 95% non-condensing at +55°C (131°F)	✓ ✓ ✓
Mounting in the kiosk	• From outside without EVA plate • From inside with EVA plate	✓ ✓
Accessory	• Adapter cable for standard 12V PSU • EVA EPS mounting steel plate • USB cables, serial cables... • PSU 12V DC...	✓ ✓ Option Option
Add-on boxes	• POWER add-on box (slot#1) • MDB add-on box (slot#2) • 4G + BT add-on box (slot#2)	Option Option Option



www.ingenico.com

ingenico