

# Lane/8000

Driving sleek, secure and smart checkout experiences



- Engage consumers with a large multimedia touchscreen and user-friendly HTML5 interface
- Quick and easy payment options to improve checkouts
- Integrate simply into any environment
- Help reduce PCI-DSS audit scope with seamless semi-integrated configuration options



ingenico



Designed for speed and efficiency, the Lane/8000 creates new points of consumer engagement that improve brand loyalty and drive additional sales.



**All payment methods accepted including QR code payment thanks to an optional camera**

**Designed for fast checkout in retail:**

- X-Large capacitive screen
- Clear contactless zone
- Large white backlit keypad
- Payment methods illuminated

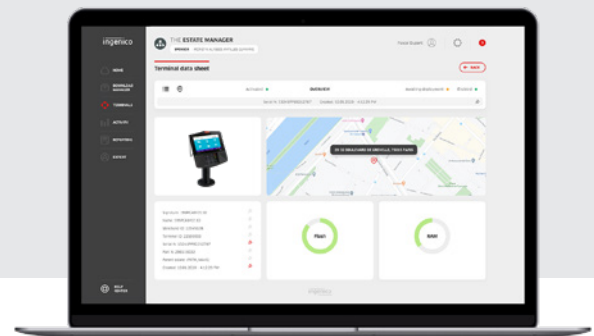
**X-large 7" color touchscreen and ergonomic interface**

**Highest security:**

- PCI PTS
- Optional PCI compliant privacy shield
- Detection of abnormal cable removal to alert and inhibit the terminal in the case of threat
- Anti-theft Kensington lock

**Supported by Ingenico's suite of services**

- Fleet management & security solutions
- Hardware services
- Professional services



<b>Processor</b>	• Crypto & Applications Processor	• Cortex A5	✓
<b>Memory</b>	• Internal • External	• 512 MB Flash, 512 MB RAM • Micro SD up to 32 GB	✓ Option
<b>OS</b>		• Telium TETRA HTML5	✓
<b>SAM</b>		• 3	Option
<b>Card Reader(s)</b>	• Magstripe (dual head) • Smart Card • Contactless	• ISO1/2/3, 500K reads lifespan • EMV Level 1, 500K reads lifespan • EMV Level 1 compliant	✓ ✓ ✓
<b>Display</b>	• Colour	• 7" backlight WVGA, TN* display (800x480)	✓
<b>Touchscreen</b>	• Capacitive	• Finger & stylus (1000K lifespan signature)	✓
<b>Stylus</b>	• Passive	• Tethered included	✓
<b>Keypad</b>		• 15 keys, raised markings, backlit	✓
<b>Camera</b>		• 5M pixels autofocus (QR code library embedded)	Option
<b>Audio</b>	• Buzzer • Audio Jack • Speaker	• Stereo • Mono	✓ Option Option

<b>Terminal Connectivity</b>	• Wired • Wireless	• Ethernet 10/100 base T • Ethernet switch • WIFI and Bluetooth	✓ Option
<b>Terminal Connections</b>	• USB • Serial • Powered USB • Powered RS 232 • Powered Ethernet	• USB Host • 2nd USB Host • USB Slave • 1 RS232 • 12 V (USB retail) • 12 V • PoE 802.3af compliant	✓ Option ✓ ✓ ✓ Option
<b>Stand Mounting</b>		• Universal Payment Mount	✓
<b>Terminal Size</b>		• 200 x 205,5 x 44 mm (7,87" x 8,07" x 1,73")	✓
<b>Weight</b>		• 583g (20,56oz) • 796g (28,08oz)	✓
<b>Environment</b>	• Operating temperature • Storage temperature • Relative humidity	• 0 to +50°C (32°F to 122°F) • -20 to +70°C (-4°F to 131°F) • 85% HR at +40°C (104°F)	✓ ✓ ✓
<b>Accessories</b>	• Privacy shield	• PCI compliant	✓
<b>Security</b>	• PCI PTS • Anti-removal • Anti-theft	• PCI PTS 6.x and 5.x certified • Active connector removal • Kensington lock receptacles • Secure mounts available	✓ ✓ ✓ Option

\* TN: Twisted Nematics

\*\*AWVA: Angle Wide Vertical Aligned to provide a better viewing angle, better color depth and no grey inversion phenomenon

